

AUROTM

Audi 2015 Q5-B001

TUTORIAL

Trademarks

Auro™ and OtoSys™ are trademarks of Shenzhen HC Tech CO., Ltd., registered in China, the United States and other countries. All other marks are trademarks or registered trademarks of their respective holders.

Copyright Information

No part of this manual may be reproduced, stored in a retrieval system or transmitted, in any form or by any means, electronic, mechanical, photocopying, recording, or otherwise, without the prior written permission of Auro.

Disclaimer of Warranties and Limitation of Liabilities

All information, specifications and illustrations in this manual are based on the latest information available at the time of printing.

Auro reserves the right to make changes at any time without notice. While information of this manual has been carefully checked for accuracy, no guarantee is given for the completeness and correctness of the contents, including but not limited to the product specifications, functions, and illustrations.

Auro DOES NOT promote or encourage ANY illegal activities, all contents provided by Auro is meant for VEHICLE MAINTENANCE only.

Any action you take upon the information from this manual is strictly at your own risk, Auro will not be liable for any direct damages or for any special, incidental, or indirect damages or for any economic consequential damages (including lost profits).

For Services and Support:



www.aurodiag.com



support@eurodiag.com

For technical assistance in all other markets, please contact your local selling agent.

Safety Information

For your own safety and the safety of others, and to prevent damage to the device and vehicles upon which it is used, it is important that the safety instructions presented throughout the product user manual be read and understood by all persons operating or coming into contact with the device.

There are various procedures, techniques, tools, and parts for servicing vehicles, as well as in the skill of the person doing the work. Because of the vast number of test applications and variations in the products that can be tested with this equipment, we cannot possibly anticipate or provide advice or safety messages to cover every circumstance. It is the automotive technician's responsibility to be knowledgeable of the system being tested. It is crucial to use proper service methods and test procedures. It is essential to perform tests in an appropriate and acceptable manner that does not endanger your safety, the safety of others in the work area, the device being used, or the vehicle being tested.

Before using the device, always refer to and follow the safety messages and applicable test procedures provided by the manufacturer of the vehicle or equipment being tested. Use the device only as described in this manual. Read, understand, and follow all safety messages and instructions in this manual.

Safety Messages

Safety messages are provided to help prevent personal injury and equipment damage. All safety messages are introduced by a signal word indicating the hazard level.

DANGER

Indicates an imminently hazardous situation which, if not avoided, will result in death or serious injury to the operator or to bystanders.

WARNING

Indicates a potentially hazardous situation which, if not avoided, could result in death or serious injury to the operator or to bystanders.

Safety Instructions

The safety messages herein cover situations Auro is aware of. Auro cannot know, evaluate or advise you as to all of the possible hazards. You must be certain that any condition or service procedure encountered does not jeopardize your personal safety.

DANGER

When an engine is operating, keep the service area WELL VENTILATED or attach a building exhaust removal system to the engine exhaust system. Engines produce carbon monoxide, an odorless, poisonous gas that causes slower reaction time and can lead to serious personal injury or loss of life.

SAFETY WARNINGS

- Always perform automotive testing in a safe environment.
- Wear safety eye protection that meets ANSI standards.
- Keep clothing, hair, hands, tools, test equipment, etc. away from all moving or hot engine parts.
- Operate the vehicle in a well ventilated work area, for exhaust gases are poisonous.
- Put the transmission in PARK (for automatic transmission) or NEUTRAL (for manual transmission) and make sure the parking brake is engaged.
- Put blocks in front of the drive wheels and never leave the vehicle unattended while testing.
- Be extra cautious when working around the ignition coil, distributor cap, ignition wires and spark plugs. These components create hazardous voltages when the engine is running.
- Keep a fire extinguisher suitable for gasoline, chemical, and electrical fires nearby.
- Do not connect or disconnect any test equipment while the ignition is on or the engine is running.
- Keep the test equipment dry, clean, free from oil, water or grease. Use a mild detergent on a clean cloth to clean the outside of the equipment as necessary.
- Do not drive the vehicle and operate the test equipment at the same time. Any distraction may cause an accident.
- Refer to the service manual for the vehicle being serviced and adhere to all diagnostic procedures and precautions. Failure to do so may result in personal injury or damage to the test equipment.
- To avoid damaging the test equipment or generating false data, make sure the vehicle battery is fully charged and the connection to the vehicle DLC is clean and secure.
- Do not place the test equipment on the distributor of the vehicle. Strong electro-magnetic interference can damage the equipment.

CONTENTS

TRADEMARKS	i
COPYRIGHT INFORMATION	i
DISCLAIMER OF WARRANTIES AND LIMITATION OF LIABILITIES	i
FOR SERVICES AND SUPPORT:.....	i
SAFETY INFORMATION	ii
SAFETY MESSAGES	ii
SAFETY INSTRUCTIONS.....	ii
INTRODUCTION	1
KEY LEARNING UNDER ALL KEYS LOST SCENARIO	2

Introduction

This manual introduces how to conduct 2015 Audi Q5 Key learning or All keys lost with Auro OtoSys IM600.

Two options are available when accessing the IMMO function under different scenarios:

- Key Learning – user has at least one working key when conduct key learning.
- All keys lost – user has no working key when conduct key learning.

The operation procedures of Key learning and All keys lost on IM600 tablet are basically the same. Take All keys lost as an example here.

➤ **Procedures before getting started:**

1. Connect the OtoFlash to the vehicle's DLC via the main cable for both communication and power source
2. Connect the OtoFlash to the tablet via BT pairing, or USB connection
3. Connect the IM600 tablet to the included UP400 via USB cable
4. Make sure the WiFi service is available
5. Turn the ignition on, or turn on the hazard lights

 **NOTE**

Illustration used in this manual are samples, and the actual testing screens may vary by vehicle. Observe the menu titles and on-screen instructions to make correct selections and operations

Key Learning under All Keys Lost Scenario

1. Turn on the IM600 tablet, tap **OtoSys** on the main interface screen, then **IMMO**. A vehicle menu displays and a disclaimer prompts up. Tap **Accept** to continue.



Figure 1 Sample Main Interface

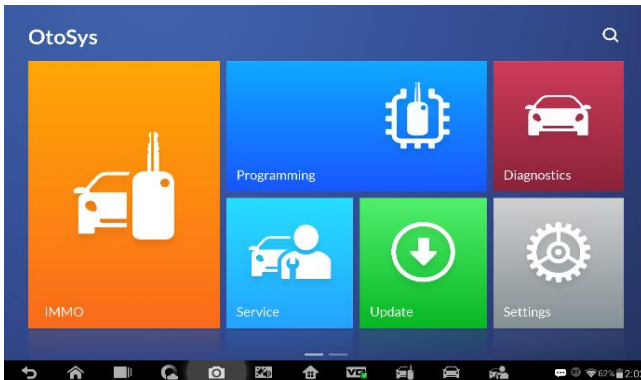


Figure 2 Sample OtoSys Interface

2. Connect the IM600 tablet to WiFi, then go back to the vehicle menu.

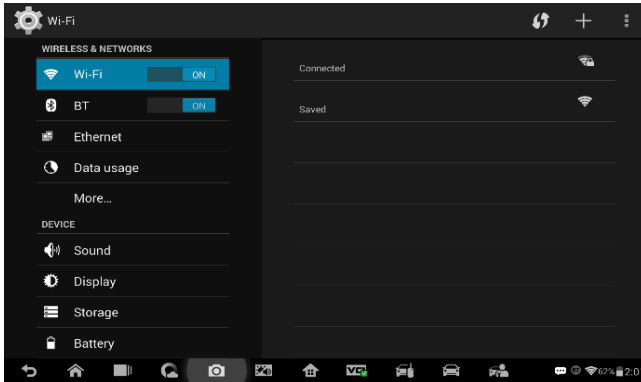


Figure 3 Sample WiFi Connecting Screen

3. Tap **Audi** on the vehicle menu, then tap **2015-2017 vehicle model** to the Function Select interface.

NOTE

You can click on the icon near the top-right corner to record the operation data. If you encounter any difficulties, click on the icon again to send us the data and problems, so that our engineers could help.

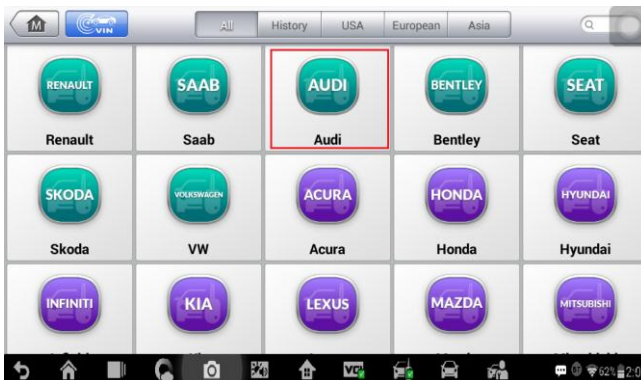


Figure 4 Sample Vehicle Menu

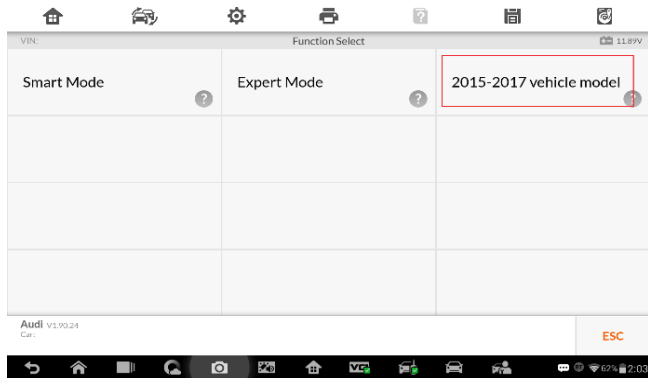


Figure 5 Sample Main Function Select Screen

4. Tap **Q5** to the Main Function Select interface.



NOTE

Check details of practicable Blank Keys via tapping **Key Pictures**.

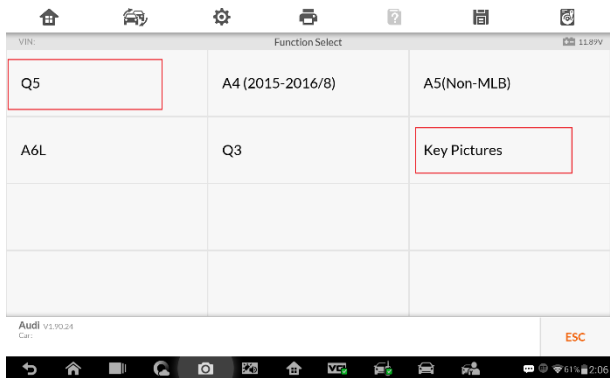


Figure 6 Sample Function Select Screen

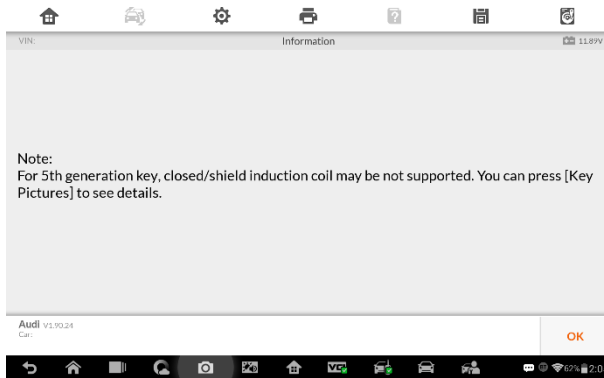


Figure 7 Sample Information Screen

5. Tap **All keys lost** on the Main Function Select interface.

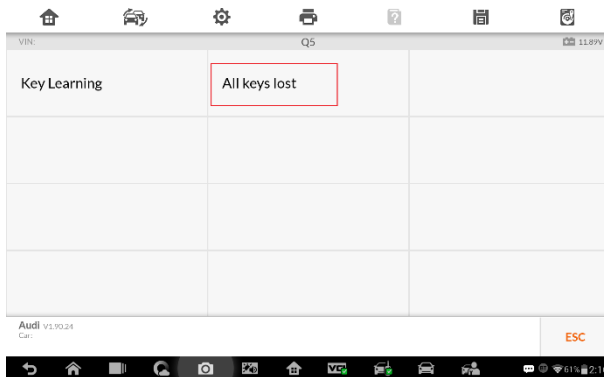


Figure 8 Sample Main Function Select Screen

6. Proceed as information displayed on the popup window. Then tap **OK** on the popup window. Reading IMMO data starts automatically.

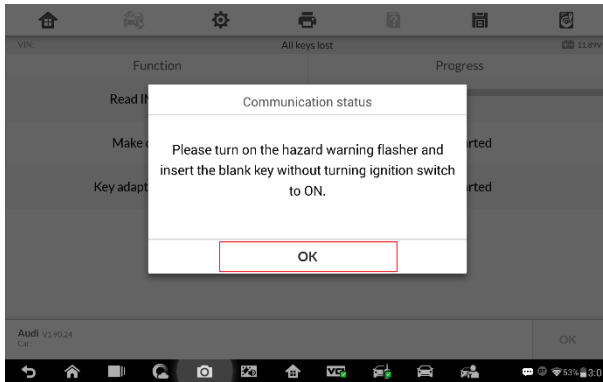


Figure 9 Sample Communication Status Screen

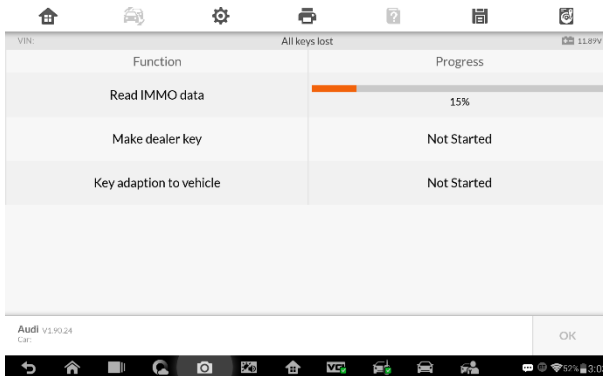


Figure 10 Sample Reading IMMO Data Screen

7. Tap OK displayed on the popup window after reading IMMO date.

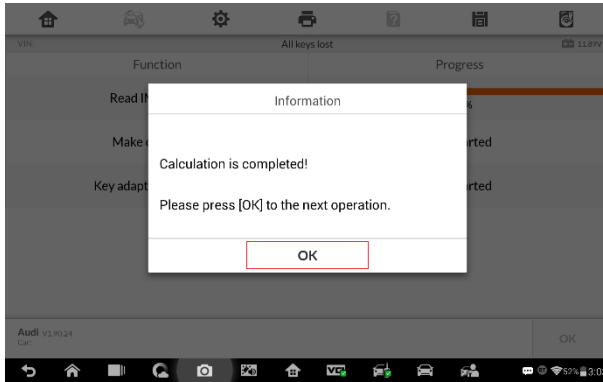


Figure 11 Sample Information Screen

8. Proceed to make dealer key(s) as information displayed on the popup windows.

NOTE

- Tap **No** and proceed as information displayed if you've got dealer key(s).
- Put the Blank Keys in the programmer keyhole one by one if you need to make more than one dealer key.

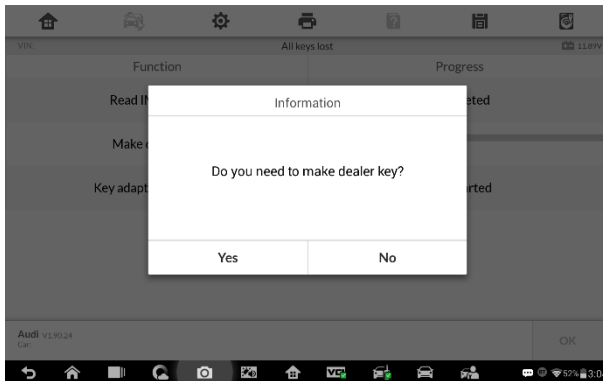


Figure 12 Sample Information Screen

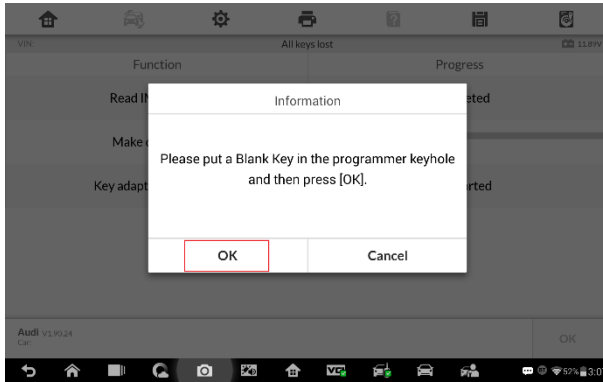


Figure 13 Sample Information Screen

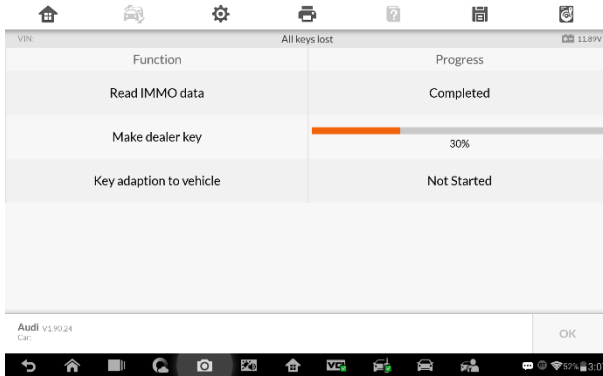


Figure 14 Sample Information Screen

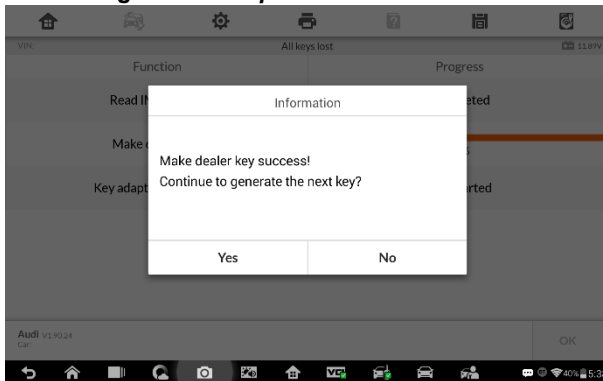


Figure 15 Sample Information Screen

- Key learning procedures start automatically after making dealer key(s) successfully. Select the number of keys that need to be learned. Tap **OK** to proceed.

NOTE

The number should be the sum of existing working keys brought with you and the new keys you need. For example, you've got 2 working keys, 1 blank key needs to be made dealer key, but all 3 keys need to be learned, select 3 here.

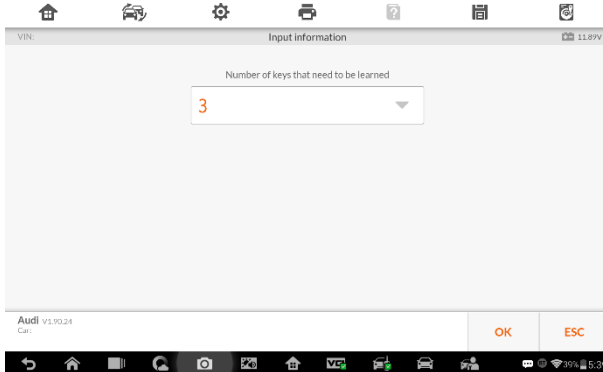


Figure 16 Sample Input Information Screen

- Proceed for key learning as information displayed on the popup window. Tap **OK** when operation over.

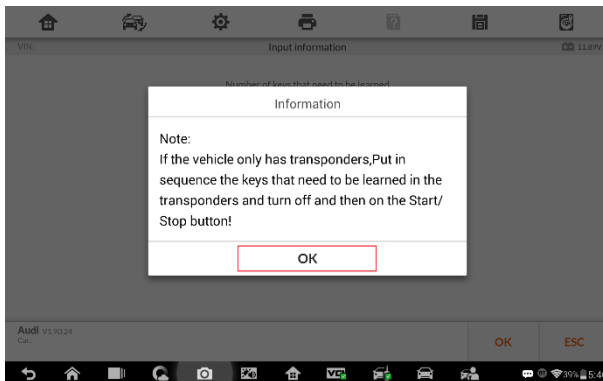


Figure 17 Sample Information Screen

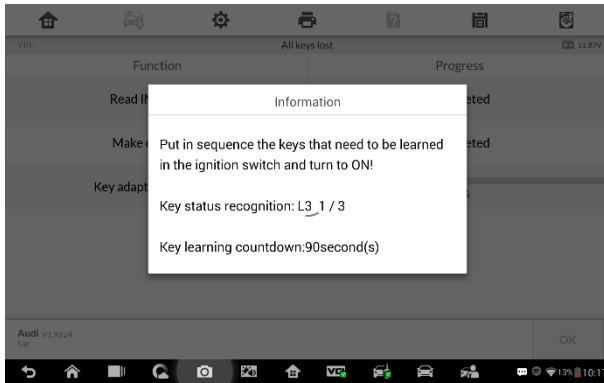


Figure 18 Sample Information Screen

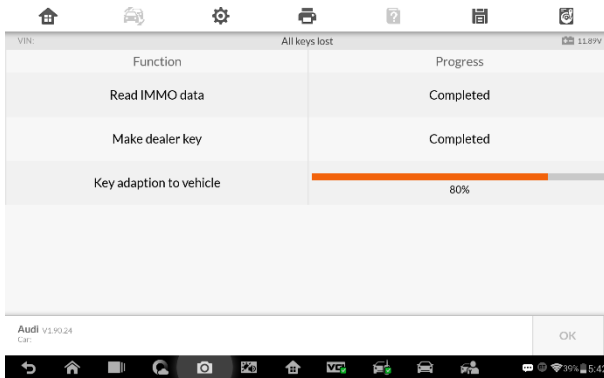


Figure 19 Sample Key Adaption Screen

11. Tap OK on the popup window after key learning success. Key learning under All keys lost scenario completes.

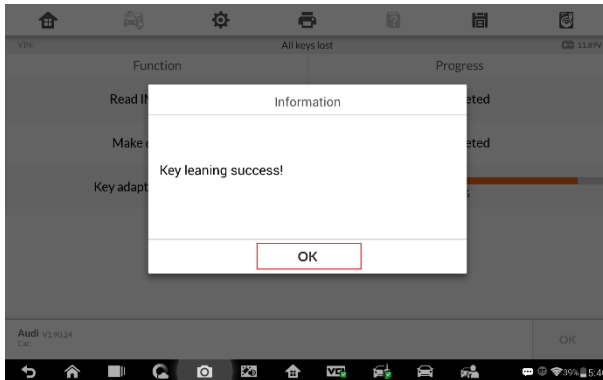


Figure 20 Sample Information Screen